

# vSolution Cynap Core Pro: Wireless presentation, web conferencing & collaboration



# Cynap Core Pro: Next generation working & learning



Cynap Core Pro\* is a wireless presentation, web conferencing and collaboration system, providing wireless screen sharing for all iOS, Android, Windows, macOS, and Chrome OS devices, together with a unique set of collaboration and web conferencing tools.

Our award-winning, easy-to-use, Cynap GUI, enables Zoom, Microsoft Teams and WebRTC web conferencing clients to combine seamlessly with touchscreen compatible annotation and whiteboard functionality, a

built-in media player, plus Microsoft /Office 365 functionality, providing an outstanding multi-functional collaborative working experience, ideal for hybrid or in-person classrooms, meeting spaces and courtrooms of any size.

Cynap Core Pro units can also be used as client devices as part of our vSolution MATRIX Networked-AV solution.

**Driving Knowledge Creation.**

*\*Available Q2 2021*



## Our Vision

When you've got something to say, we believe it is important that getting your message across and making an impact should be as easy as possible.

Our aim is to help you to explain it better, to give you the freedom to share your knowledge and collaborate with others - however you want, and whenever you want, when your audience is in the same room or on the other side of the world.

**Because knowledge matters -  
to all of us.**

# System advantages

## No apps, no dongles, no cables, no hassle!



Cynap Core Pro supports AirPlay, Miracast, and Chromecast screen mirroring, so no apps, buttons, dongles or extra software are needed when sharing content on-screen from any smartphone, laptop or tablet.

## Best of both worlds connectivity!



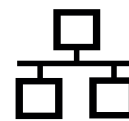
Multi-source wireless screen sharing makes working together easier than ever before. For classroom, meeting space or courtroom installations that require additional connectivity options, Cynap Core Pro also includes an HDMI In port, for example for connecting an in-room PC, Visualizer or camera, etc.

## Integrated web browser



Display web-based content side by side on-screen, together with your regular presentation materials for incredible flexibility in classrooms or meeting rooms - secure and virus-free browsing.

## Implementation advantages



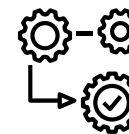
The ability to configure three separate networks (ie. BYOD WiFi, control and admin, and internet service, offers significant advantages when planning your working and learning environments.

## Display & share your files easily

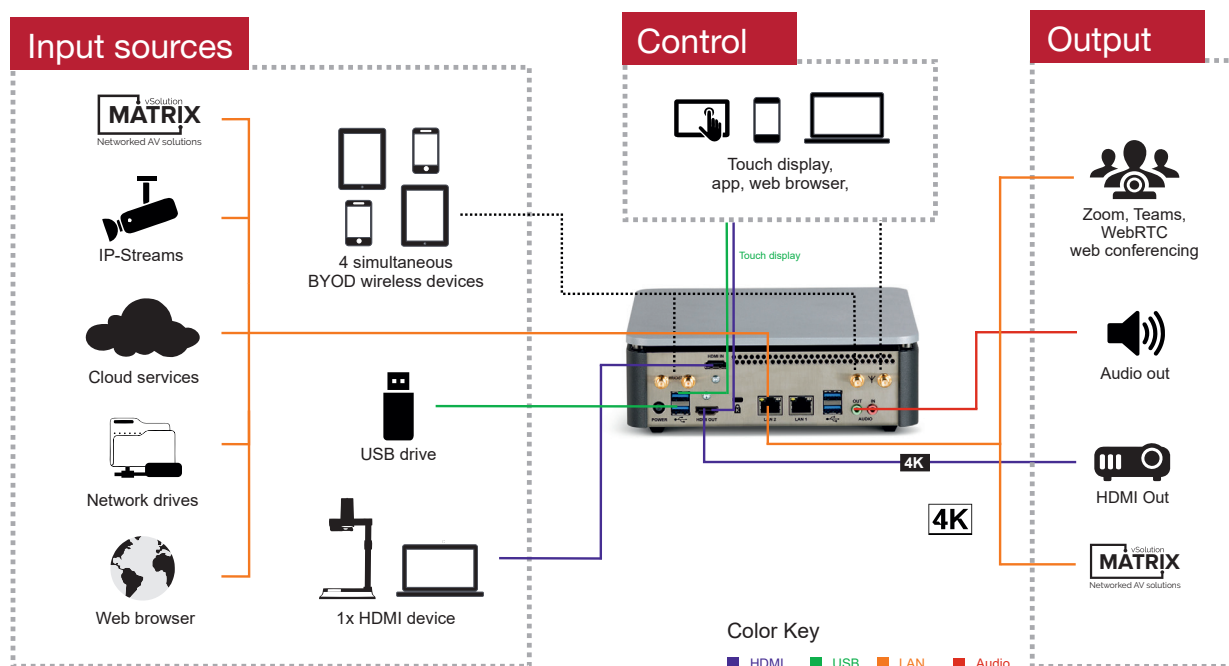


Share your data on-screen easily from network drives, mobile devices or by using the Office 365 interface. Even your laptop is no longer essential – simply bring your content on a USB stick, or download it directly from the cloud!

## Remote management & administration



Our vSolution Link Pro software is supplied free of charge facilitating easy remote setup, monitoring, management, and updating of multiple systems across multiple locations.



# Maximum collaboration!



## Instant access to Zoom meetings!

Support for Zoom and Teams video meetings is provided. A WebRTC web conferencing interface is also provided. You can even store your Zoom/Teams and WebRTC credentials on our mobile app ensuring easy, touchless operation.

## Microsoft / Office 365 integration

Work together and access popular Office 365 apps directly from Cynap Core Pro including Word, PowerPoint, Excel, Outlook, Microsoft Teams, and OneNote (active Office 365 account required).



## Whiteboard and annotation

Add to your content material using our built-in easy-to-use annotation features - or note down your ideas using the digital whiteboard, and save the output of both for further use.

## Optional lecture capture integration

Adding the optional Capture Feature Pack enables Cynap Core Pro to act as a capture agent for Panopto and other compatible video management platforms.\*

\*Available Q3 2021



# Technical specifications



Optional remote control

## Features

## Cynap Core Pro

Operating system	Linux
Output resolution	2160p30, 1080p60/30 (4.4.4), 720p
Supported devices for wireless mirroring (up to 4K depending on device)	iOS, iPadOS, Android, Windows, macOS, Chrome OS
Supported mirroring protocols	AirPlay, Miracast (Peer-to-Peer and MICE), Chromecast, vSolution Cast
vSolution MATRIX compatible	Yes, client only
vSolution Link Pro remote admin software	Yes (included for Windows 10 desktop, Windows 10, Windows Server (2012R2, 2016), Windows Web Server, macOS)
Media Player: Supported image file formats	GIF, JPEG, BMP, PNG
Media Player: Supported document file formats	PDF, Word, PowerPoint, Excel, Text, HTML
Media Player: Supported video file formats	AVI, WMV, MOV, MP4, DivX, MKV, M4V, OGV
Media Player: Supported audio file formats	MP3, WMA, MKA, OGA, OGG
Touchback functionality	Yes, for Windows devices (Miracast & vSolution Cast)
Max. no. of on-screen windows	4
Cloud services	Yes, Google Drive, Dropbox, Box, Jianguoyun, OneDrive, WebDAV
Microsoft/Office 365 integration	Yes, (current Microsoft 365 account required)
Capture Agent for Panopto and other compatible video management platforms	Yes, functions as capture agent via optional Feature Pack (*available Q3 2021)
Access to network drives	Yes
Whiteboard and annotation	Yes
Protected/Open presentation modes	Yes
Web conferencing support	Zoom, Microsoft Teams, WebRTC
Customizable background image	Yes
Encrypt and save personal user settings	Yes, save onto USB stick
Integrated web browser	Yes, with customisable homepage, bookmarks and screensaver
Inputs/Outputs	HDMI Out x1, HDMI In x1, Rear USB 3.0 x4, Front USB 2.0 x1, Audio Line In x1, Audio Line Out x1, 1 GigE LAN port x2, optional: HDMI In via USB framegrabber (third party)
Bluetooth device discovery	Yes (device discovery for environments where Bonjour/mDNS is disabled)
WLAN standards (802.11 ac/a/b/g/n)	2.4 GHz in Access Point Mode / 2.4 and 5 GHz in Infrastructure Mode
Network protocols	TCP/IP, FTP, HTTP, HTTPS, SNMP/NTP, SSL, SSH, UDP, LDAP, LDAPS
IP configuration	DHCP, Static (IP address, Subnet mask, Default gateway, DNS server), Proxy, Interface priority
Security authentication for LAN	IEEE 802.1X
Security encryption for wireless WLAN	WEP, WPA2, WPA2 Enterprise or IEEE 802.1X
RMS encryption	Yes
External controlling	Web interface, Visualizer, multi-touch display, room control system, keyboard/mouse, optional remote control
Dimensions (L x W x H) / Weight	203 x 196 x 67mm (7.99 x 7.71 x 2.63") / 1840g (4.05lb)
Power consumption	Max. 80W
Optional accessories	Optional remote control, 19" rackmount, VESA mount (75mm /100mm)
Included accessories	Power supply, 4x wifi antennas
Limited warranty	3 years (optional extension to 5 years)
Made In	EU/Austria

Design and specifications subject to change! | Printed in Germany, March 2021

Your WolfVision Partner:



### Head Office:

WolfVision GmbH  
6833 Klaus / Austria  
Tel. +43 5523 52250  
wolfvision@wolfvision.com

Japan Sales Office  
WolfVision Co. Ltd.  
Tel. +81 3 6233 9465  
wolfvision.japan@wolfvision.com

USA Sales Office  
WolfVision, Inc.  
Tel. +1 770 931 6802  
sales@wolfvision.us

Nordic Sales Office  
WolfVision Nordic (Norway)  
Tel. +47 9186 9736  
wolfvision.nordic@wolfvision.net

UK Sales Office  
WolfVision UK Ltd.  
Tel. +44 1628 509 067  
wolfvision.uk@wolfvision.com

Middle East Sales Office  
WolfVision Middle East (Dubai)  
Tel. +971 5617 40008  
wolfvision.mideast@wolfvision.com

Asia Sales Office  
WolfVision Pte. Ltd. (Singapore)  
Tel. +65 6636 1268  
wolfvision.asia@wolfvision.net

Germany Sales Office  
WolfVision GmbH  
Tel. 0800 9828 787  
wolfvision.deutschland@wolfvision.com